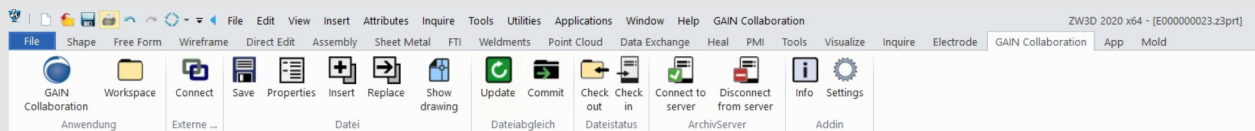




ZW3D Interface

Team Players: GAIN Collaboration and ZW3D



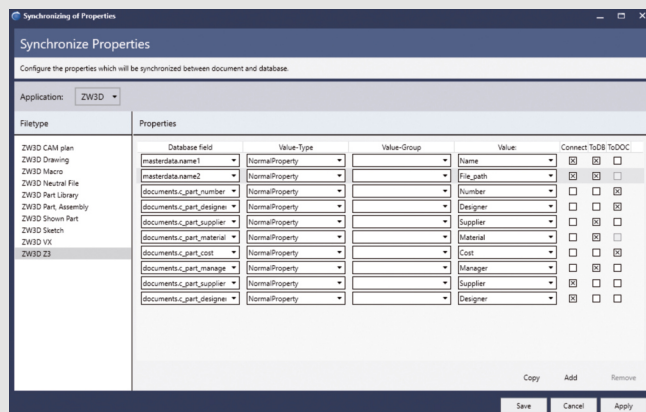
The GAIN Collaboration functions integrated into ZW3D offer you - as a designer - lots of support in your daily work. This includes the insertion of components and the connection or creation of new ZW3D documents or the use of bills of material. This is because the GAIN Collaboration interface is really deeply integrated into ZW3D.

Easy insertion of title blocks and drawing frames

The ZW3D interface allows you to insert sheets with a title block and drawing frame into your document. When you do this, GAIN Collaboration also writes or updates the properties in the

GAIN Collaboration supports all of the formats and document types that arise and are used in ZW3D.

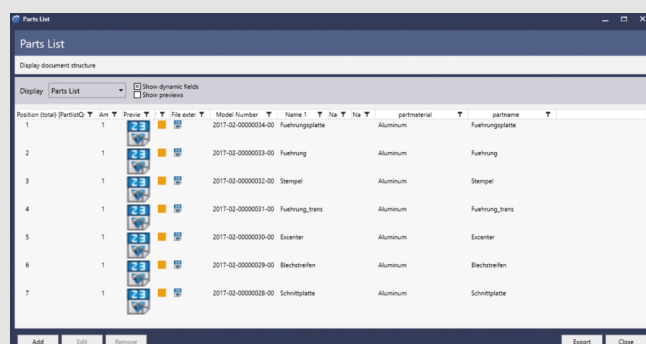
The bidirectional synchronization of file properties and attributes and the copying of complex structures (drawings with external references) are standard functions.



Automatic synchronization of information

GAIN Collaboration automatically synchronizes information with ZW3D in both directions. This means that specific field content from the GAIN Collaboration database can be automatically transferred to the file properties of a ZW3D document. It is then available in the title block of a drawing.

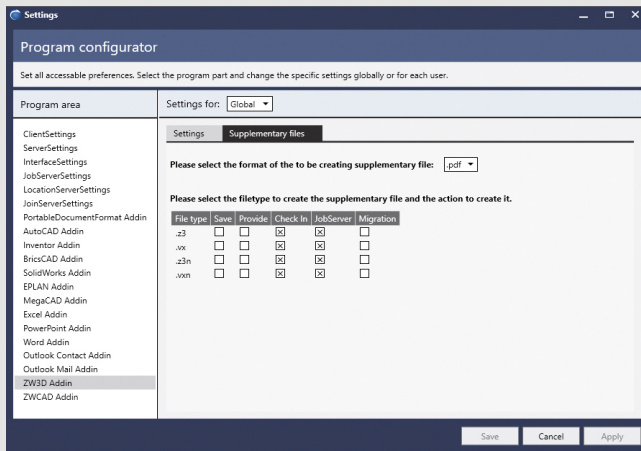
Conversely, you can transfer properties from ZW3D documents to GAIN Collaboration. This includes the material, weight, sheet size, and scale. The values are automatically determined by the interface and saved in the dataset.



Continuous - all the way to ERP

GAIN Collaboration automatically captures the bill of material information from a ZW3D document, transmits this to GAIN Collaboration, and assigns it to the dataset.

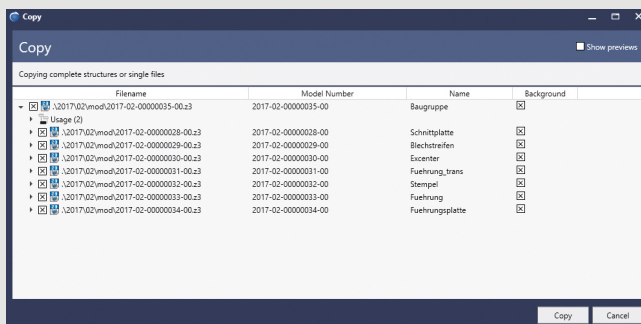
If necessary, you can add articles to the bill of material in GAIN Collaboration. You can use the coupling module in GAIN Collaboration to transfer bills of material and article master data to an ERP system.



Automatic: The generation of neutral formats for different processes

Depending on the configuration, GAIN Collaboration can automatically generate neutral formats such as PDF or XPS.

This can be done during the work process upon check-in, when the status changes, or via the integrated job server. GAIN Collaboration stores the generated neutral format with your document. From here, you can view it or have it sent by GAIN Collaboration by e-mail.

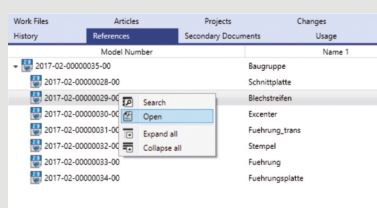


Easy copying and revising

The GAIN Collaboration system helps you to copy and revise documents (models). Documents with external references are supported, too.

During the copy process, GAIN Collaboration shows you all of the referenced documents that can also be copied. Depending on the process at hand, GAIN Collaboration can automatically give the files new numbers and replace them in the documents, too.

Depending on the configuration, revisions are labelled numerically or alphabetically. When a revision is made, GAIN Collaboration always keeps the previous version for subsequent viewing.



References and their usage

GAIN Collaboration records existing references from ZW3D documents. You can quickly view these and their usages at any time via additional tabs.

Other practical functions offer extra support in this area for your work with ZW3D documents.

Functions for intelligent interaction

GAIN Collaboration provides you with helpful functions via the ZW3D interface. This includes the connection of new documents and the insertion of documents. GAIN Collaboration also supports your teamwork. Here, GAIN Collaboration relies on the tried-and-trusted check-in and check-out procedure. This means that even distributed teams can comfortably work upon shared projects with the ZW3D interface. There's no need to interrupt or delay the work process.